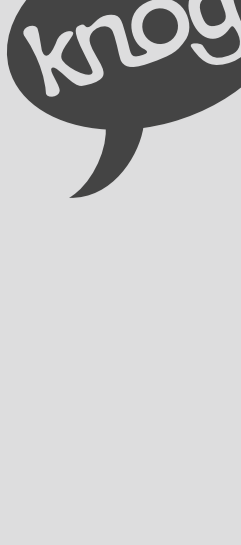


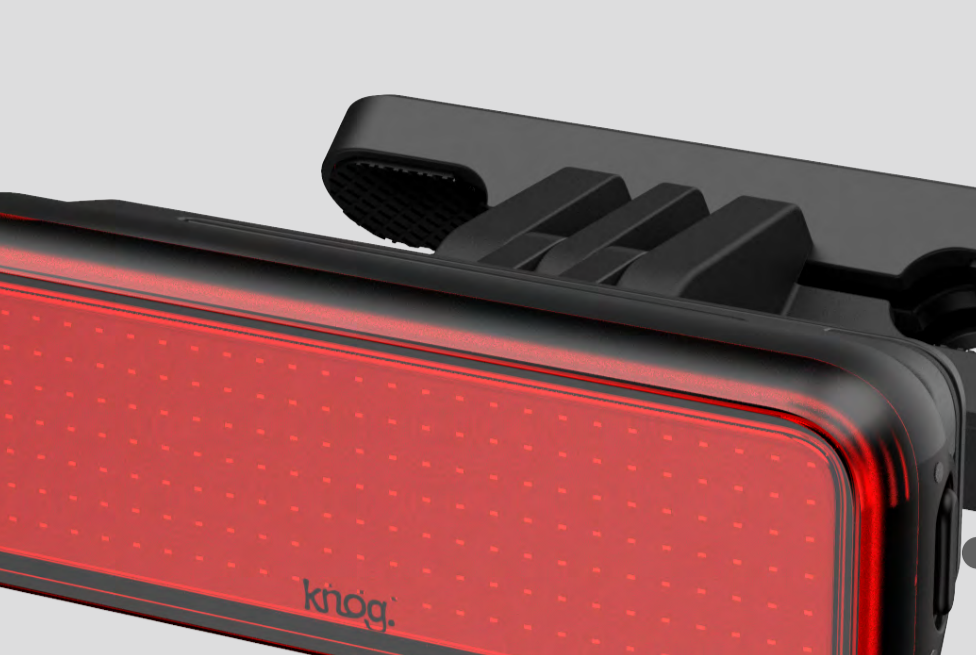
BLINDER LINK SADDLE



QUICK START GUIDE



WHAT'S IN THE BOX



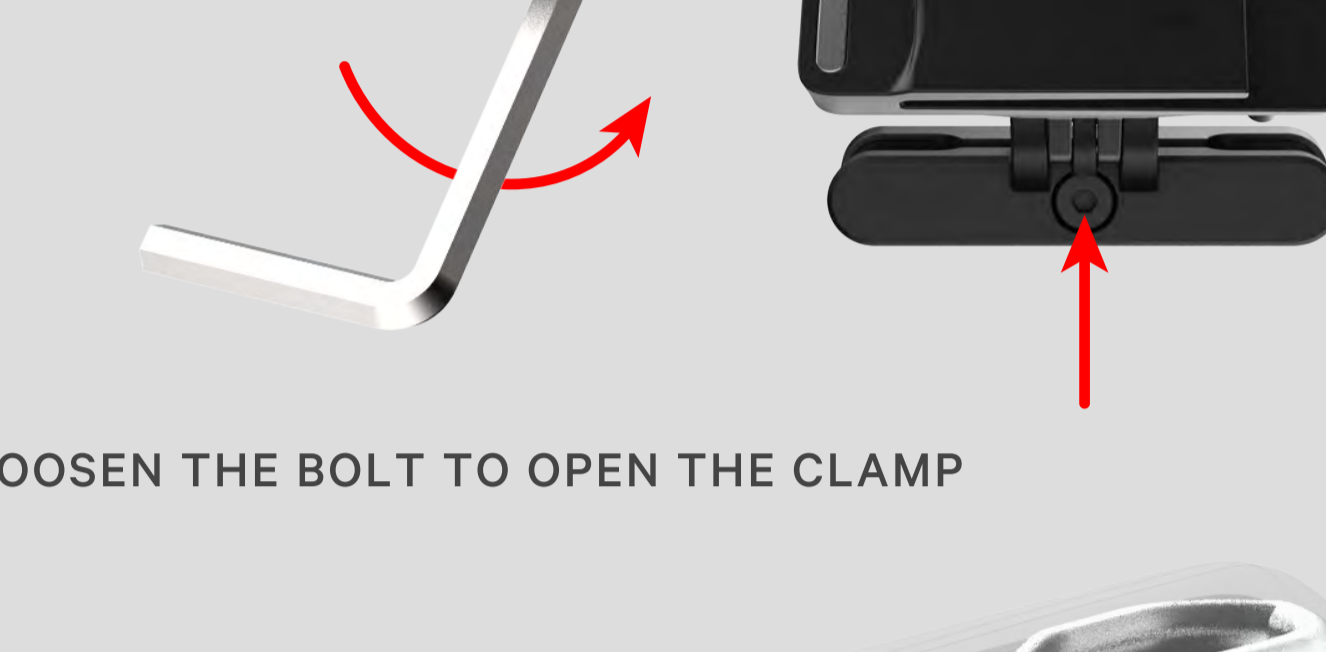
OPERATION



POWER BUTTON

LONG PRESS - ON/OFF
STANDARD PRESS - CYCLES THROUGH ALL 8 MODES

MOUNTING



REMOVE THE LIGHT FROM THE MOUNT



LOOSEN THE BOLT TO OPEN THE CLAMP



INSERT THE MOUNT BETWEEN THE SADDLE RAILS AT THE WIDEST POINT, THEN LOWER THE MOUNT INTO THE DESIRED POSITION



ONCE IN POSITION, TIGHTEN THE BOLT



SLIDE THE LIGHT BACK ONTO THE MOUNT

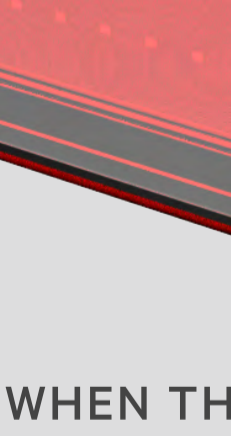


ADJUST THE LIGHT TO THE DESIRED ANGLE & TIGHTEN THE BOLT

WEARABLE



THE INTEGRATED CLIP-MOUNT TURNS THE BLINDER LINK INTO A WEARABLE LIGHT



- THE CLIP-MOUNT IS DESIGNED TO MOUNT TO THICK MATERIALS AND STRAPS
- MAKE SURE THE LIGHT IS MOUNTED VERTICALLY WITH THE POWER BUTTON AT THE TOP
- WHEN WEARING THE LIGHT, MAKE SURE THE LIGHT IS TIGHTLY FITTED AND SECURE BEFORE USE

BATTERY STATUS



WHEN THE BATTERY IS RUNNING LOW, THE RED LED WILL APPEAR

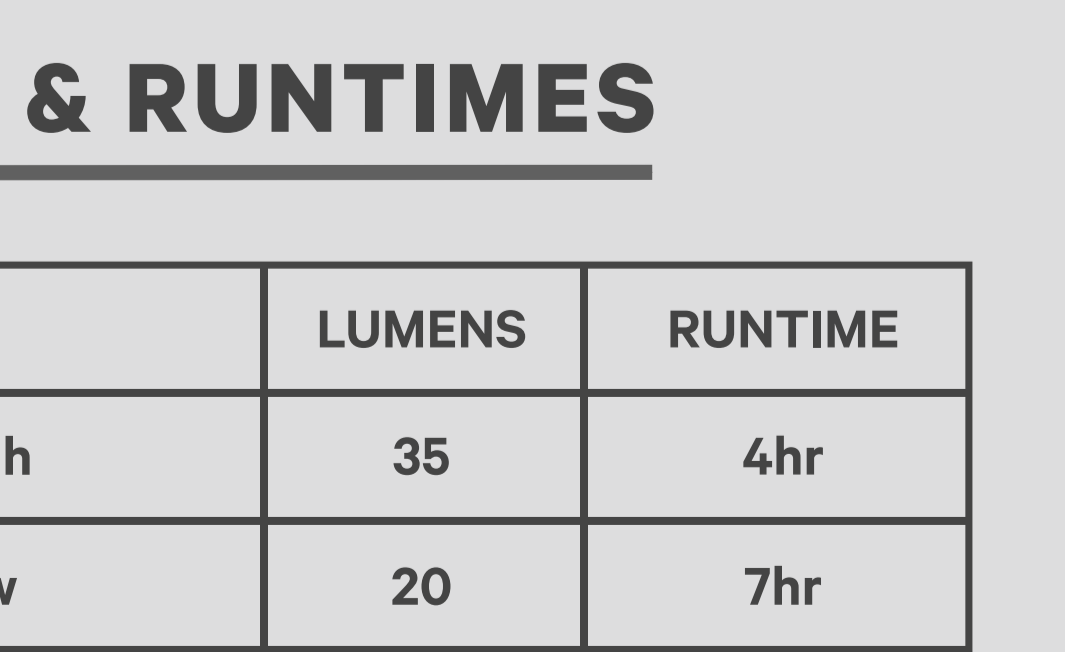
CHARGING



CAREFULLY OPEN CHARGING-PORT HATCH



INSERT USB C CHARGING CABLE
RED LED INDICATES CHARGING



GREEN LED INDICATES FULLY CHARGED

MODES & RUNTIMES

| MODE | LUMENS | RUNTIME |
|--------------------|--------|---------|
| Steady High | 35 | 4hr |
| Steady Low | 20 | 7hr |
| High Flash | 100 | 7hr |
| Low Flash | 50 | 19hr |
| Fading Flash | 30 | 14hr |
| Pulse Flash | 70 | 19hr |
| Accelerating Flash | 30 | 7hr |
| Eco Flash | 30 | 100hr |

DESIGNED BY KNOG MELBOURNE, AUSTRALIA

2 YEAR WARRANTY

KNOG.COM